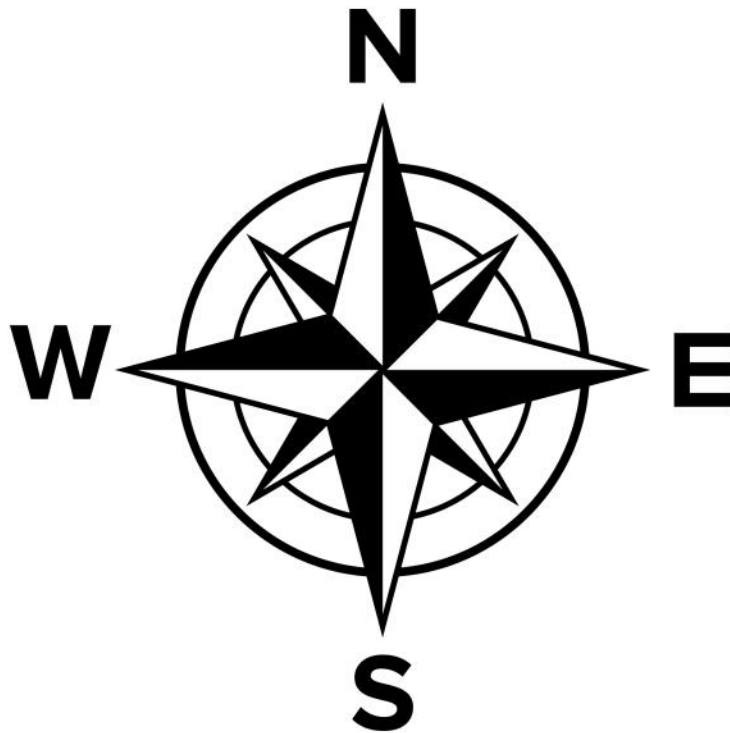
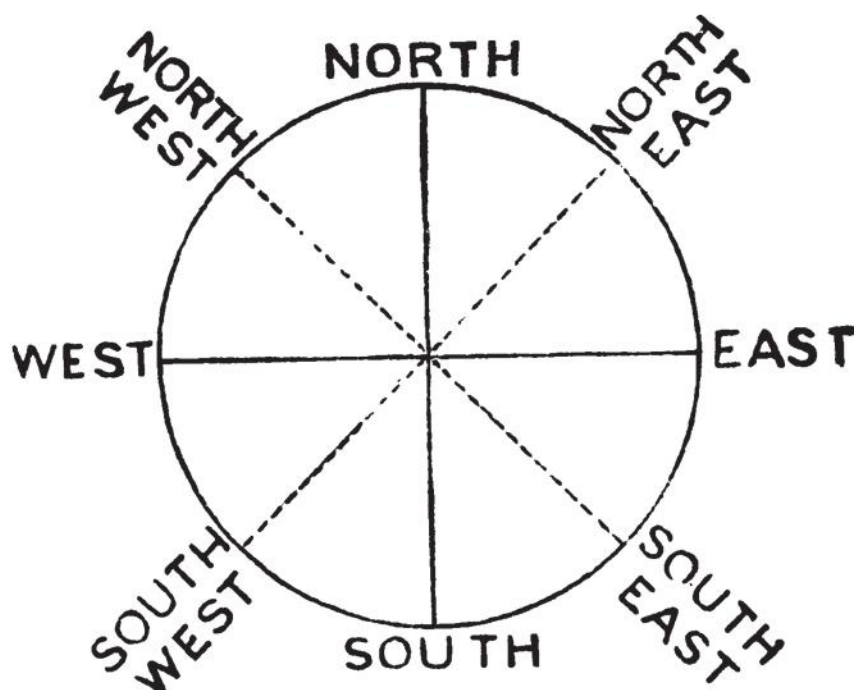


What Are The Eight Directions?

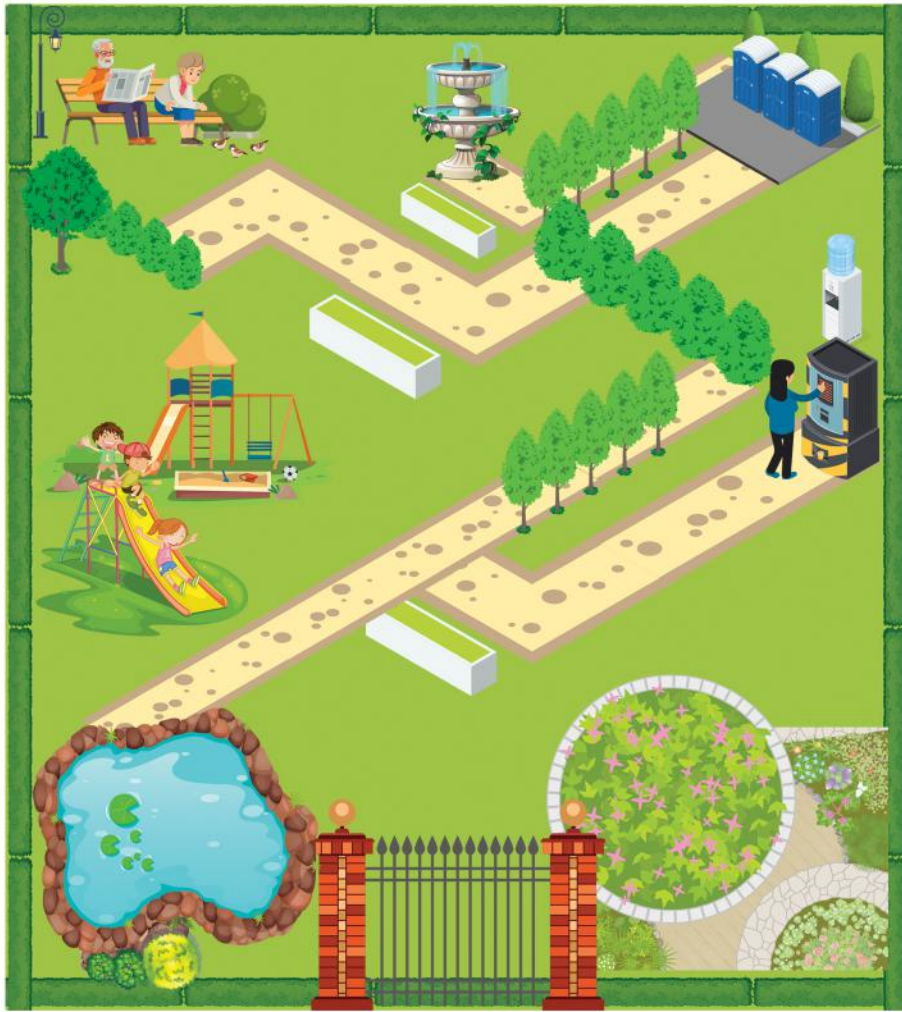
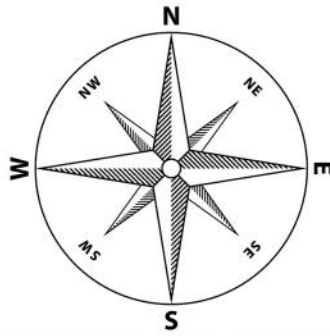
Cardinal directions or cardinal points are the four main directions or points of the compass. They are north, east, south, and west. These directions are also written as N, E, S, and W. North and south are directed towards the north and south poles of the Earth. The sun rises in the morning in the east, and sets in the evening in the west.



The intercardinal directions, also called intermediate or ordinal directions, are directions located halfway between the cardinal directions. They are northeast, northwest, southeast, and southwest.



Mention the direction in which each of the following things is located in the park.
The first one is done for you.



- | | |
|------------------------|---------------------------|
| 1 The gate South | 5 The benches |
| 2 The fountain | 6 The water coolers |
| 3 The playground | 7 The flower garden |
| 4 The washrooms | 8 The lake |