

# Facts About The Galaxies

Our universe is filled with billions and trillions of stars. These stars, along with gases and dust, form billions of galaxies in the universe. The galaxies are held together by the gravitational force. The galaxies vary in size and shape.

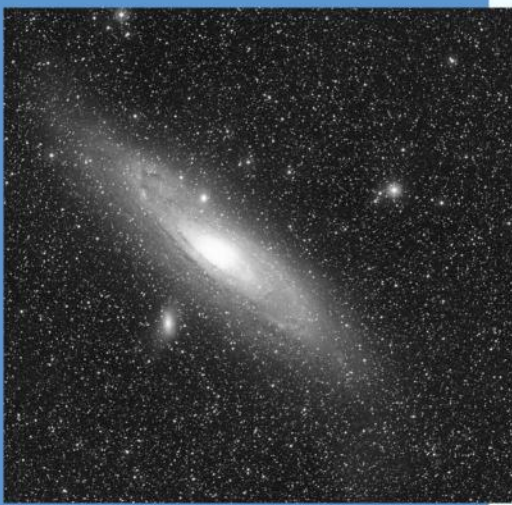
The scientists and astronomers have observed these stars for several years and have divided the galaxies into different types based on their shape.

It is believed that there are more than 100 billion galaxies in the universe. The most well - studied galaxy is the Milky Way galaxy. We live in the Milky Way galaxy.

**The galaxies are divided into the following three types based on their shape:**

- **Spiral galaxy**

More than two-thirds of all galaxies are spiral galaxies. These galaxies have a thin, flat, spinning disk, with a central bulge surrounded by spiral arms like a whirlpool. The **Milky Way** is also a spiral galaxy.

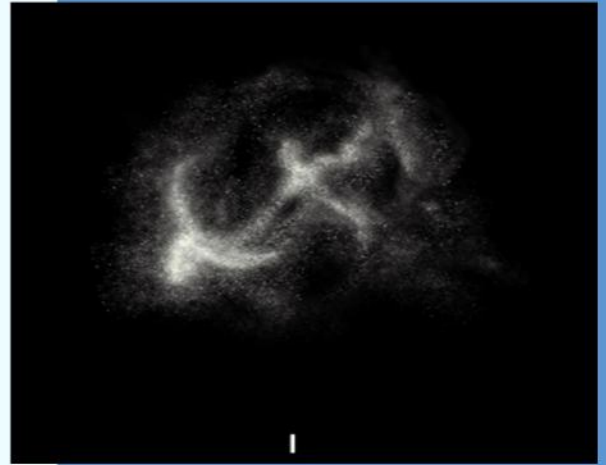


- **Elliptical galaxy**

These galaxies are round or oval in shape and do not have any central disk. They can be round like a basketball or oval like a football. The largest known galaxies in the universe are giant elliptical galaxies. Giant elliptical galaxies may contain up to a trillion stars. Smaller elliptical galaxies are known as dwarf elliptical galaxies.

- **Irregular galaxy**

These galaxies have no specific shape or structure like elliptical or spiral galaxies. They might have formed due to collisions with other galaxies or due to violent internal activity. They contain both old and new stars, along with gas.

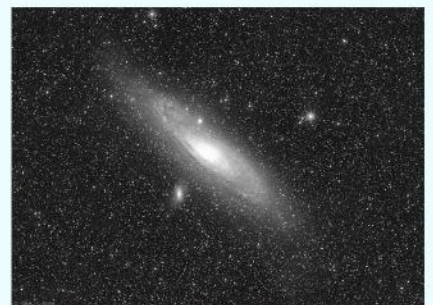
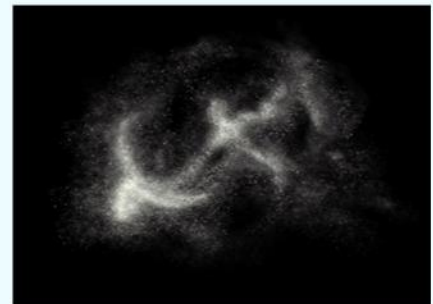


**Match the name of each galaxy with the related image by drawing a line:**

**Spiral galaxy**

**Elliptical galaxy**

**Irregular galaxy**



## Quiz Time

1. What are the galaxies made of?

---

---

---

2. What is the name and shape of the galaxy in which we live?

---

---

---

3. How does an elliptical galaxy look?

---

---

---

4. How does a spiral galaxy look like?

---

---

---

5. Why is the irregular galaxy called "irregular"?

---

---

---