

The World Of Vertebrates And Invertebrates

VERTEBRATES are organisms that possess a spine or vertebral column.
Some of the common examples of Vertebrates are:

REPTILES (Examples include
Lizards, Crocodiles, Chameleons)



BIRDS (Examples include Peacock,
Eagle, Dove)



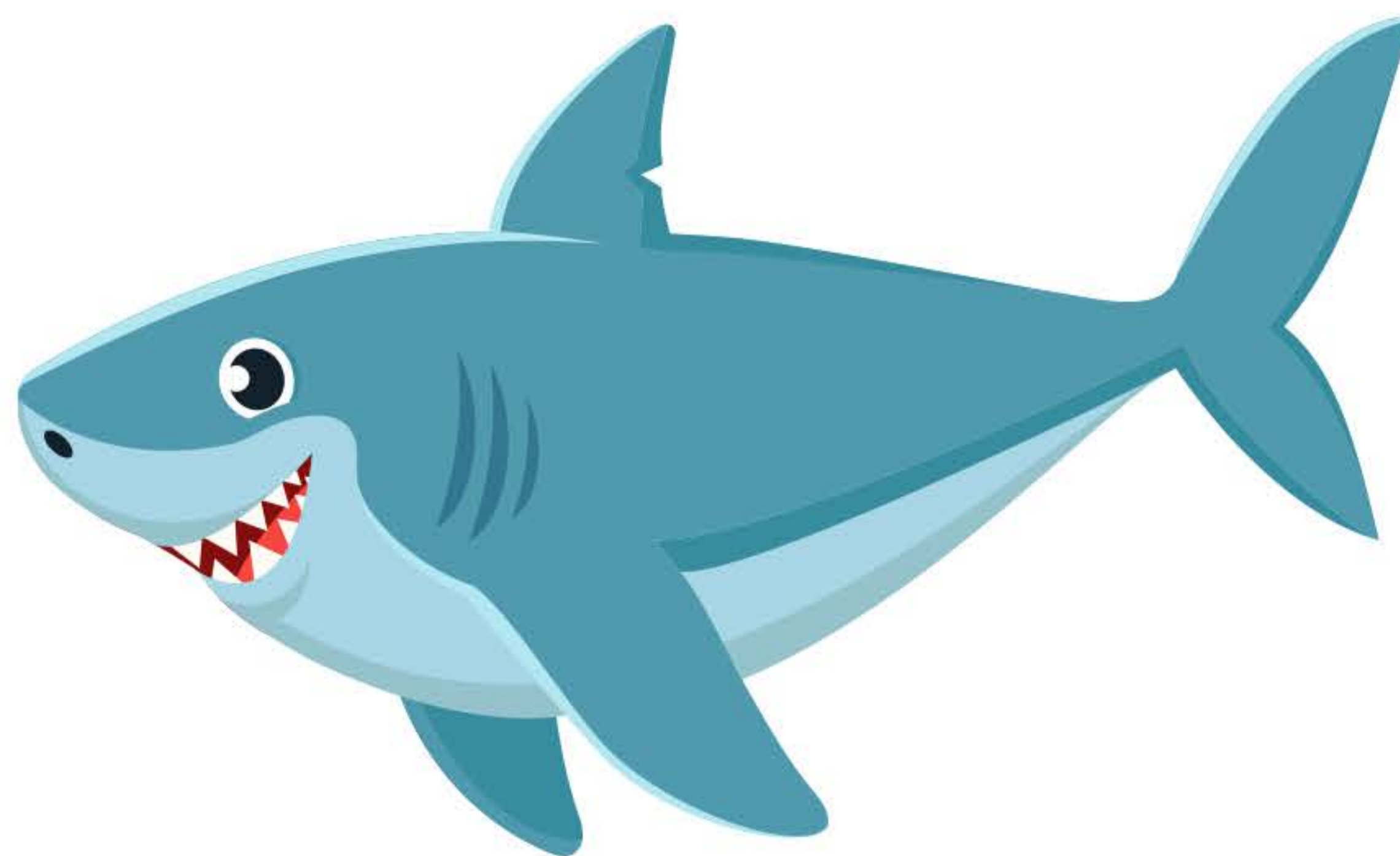
MAMMALS (Examples include
Human Beings, Gorilla, Cow)



AMPHIBIANS (Examples include
Frogs, Salamanders, Common Toad)



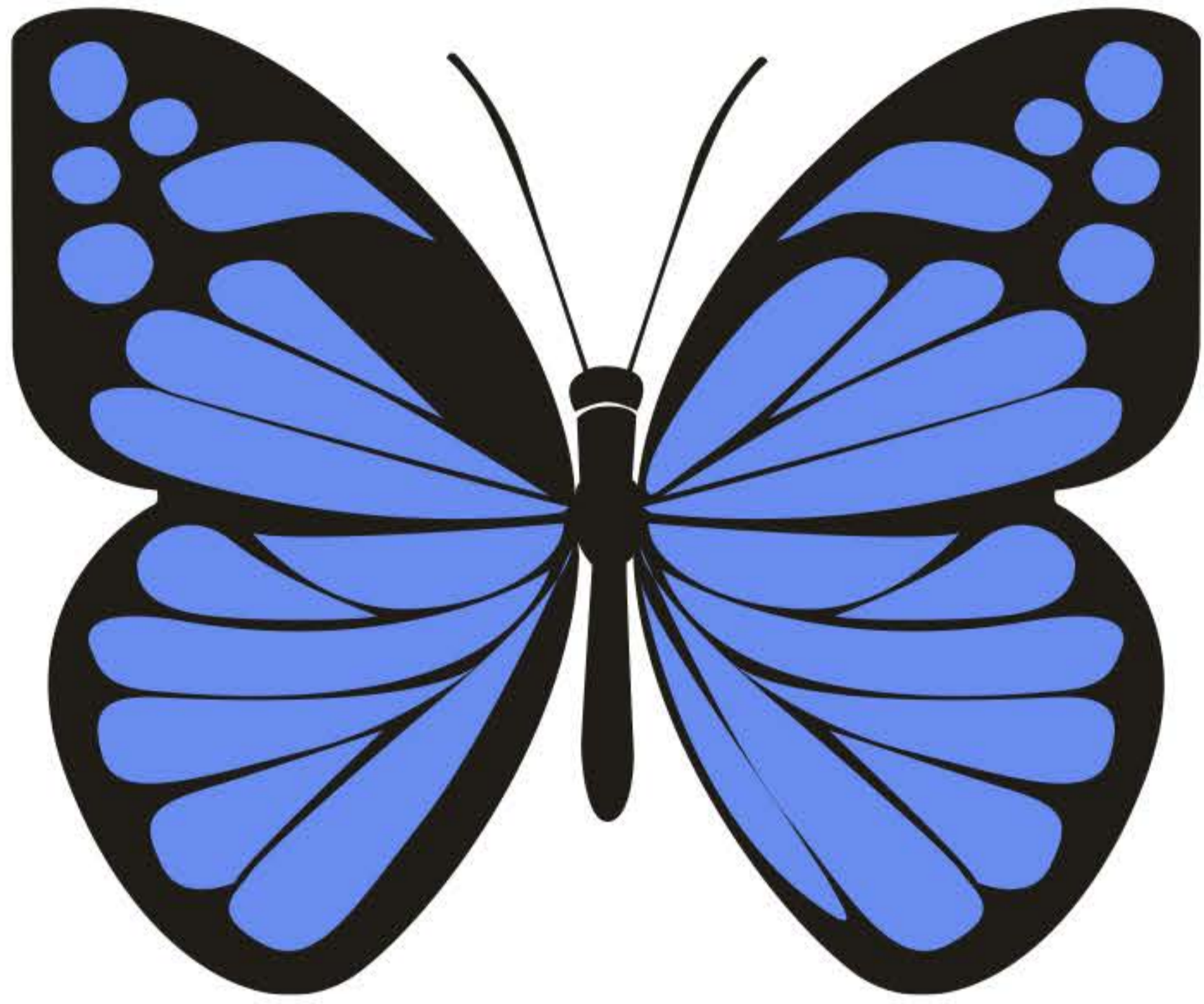
FISH (Examples include Shark, Gold Fish, King Mackerel)



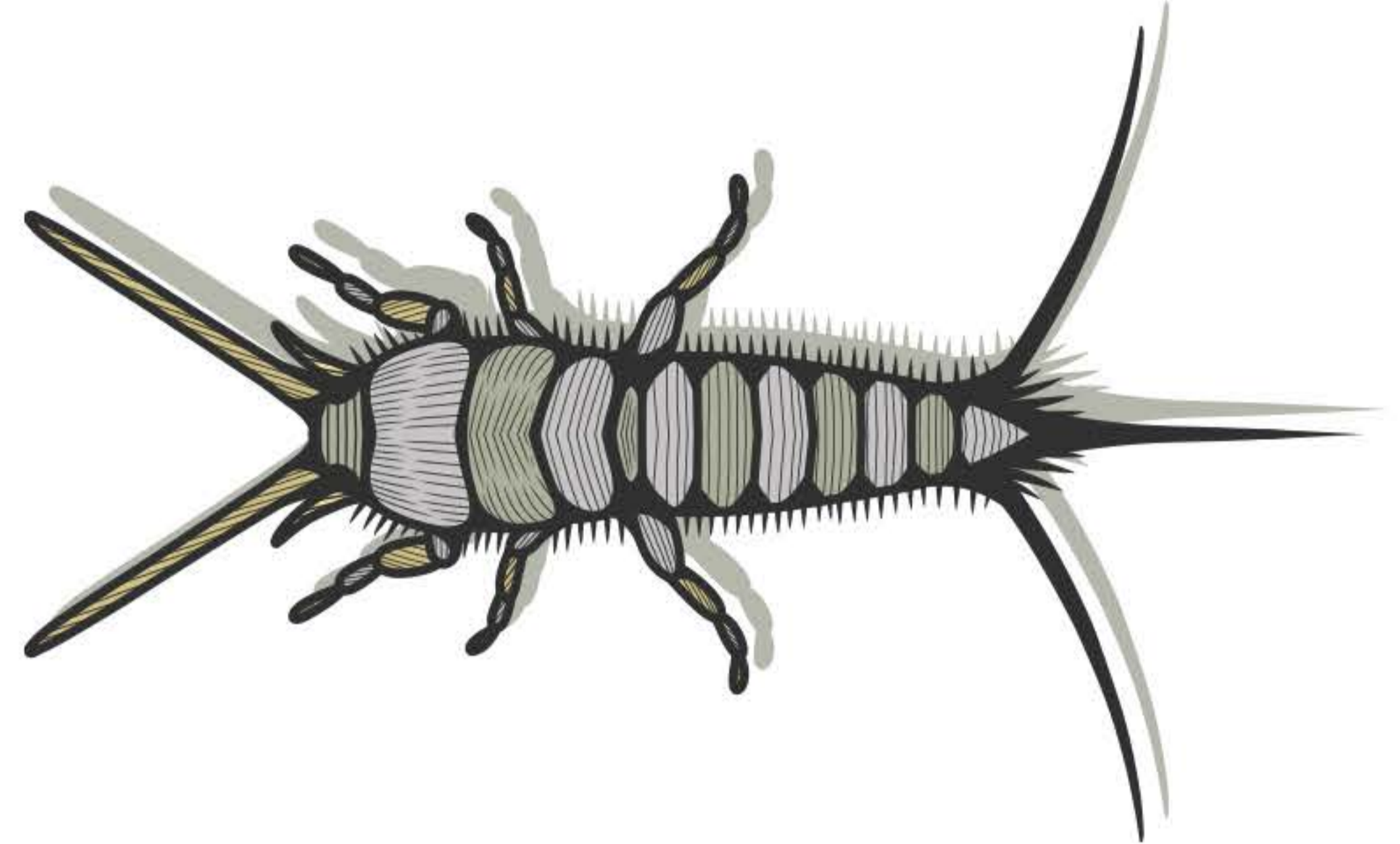
INVERTEBRATES are organisms without a spine or vertebral column.

Examples include

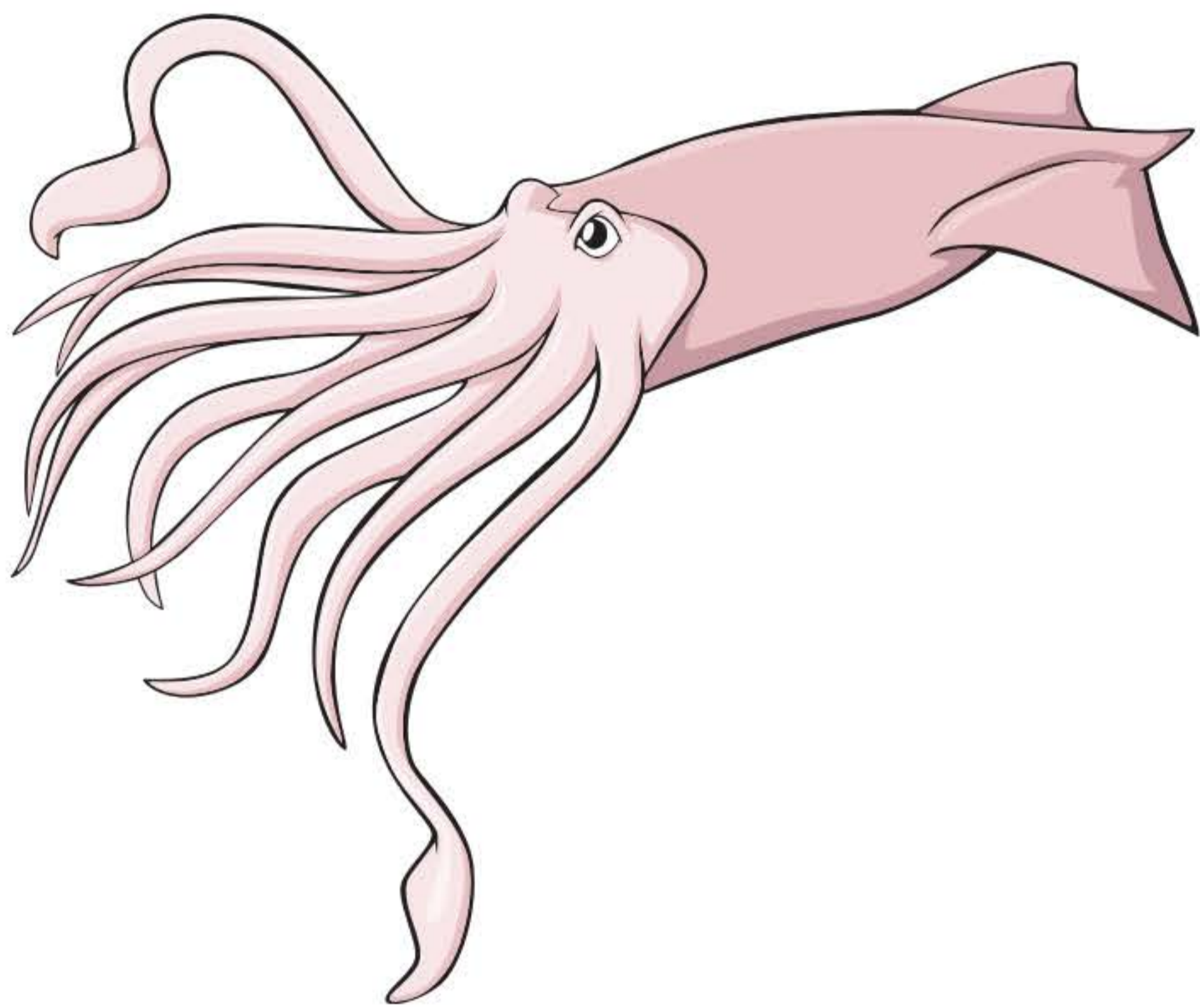
Monarch Butterfly



Silverfish



Colossal Squid



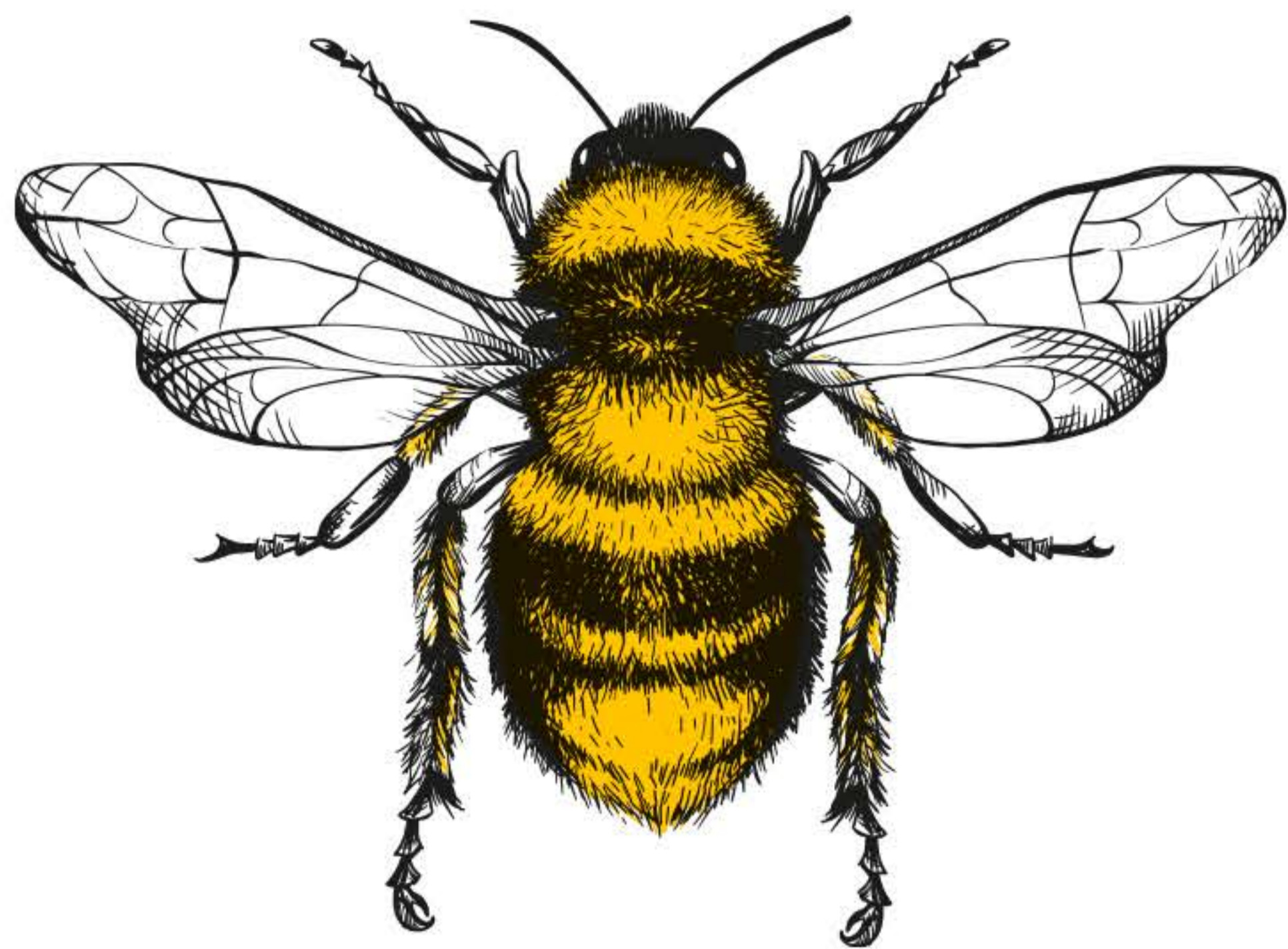
Common Octopus



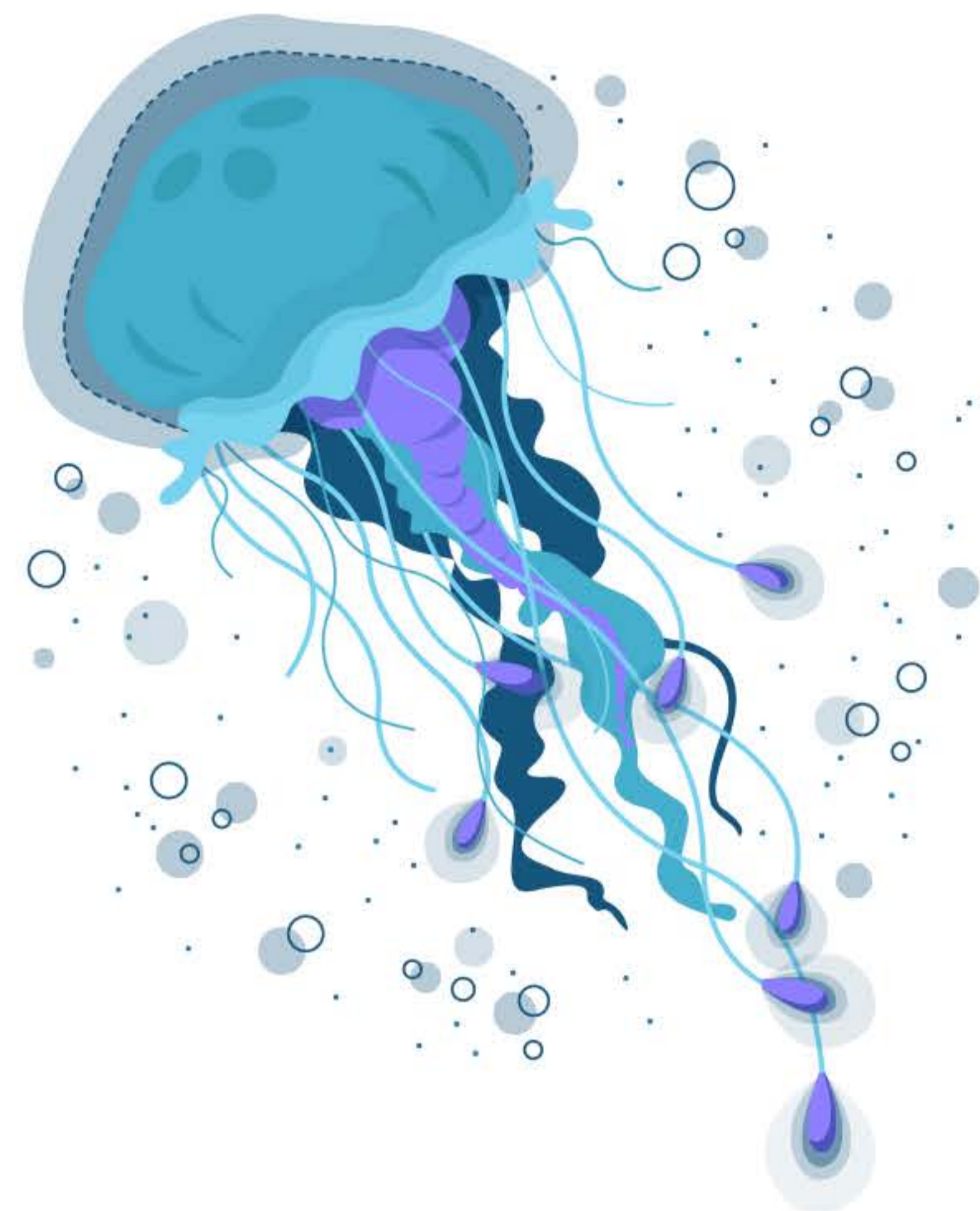
Silkworm



Common Fruit Fly



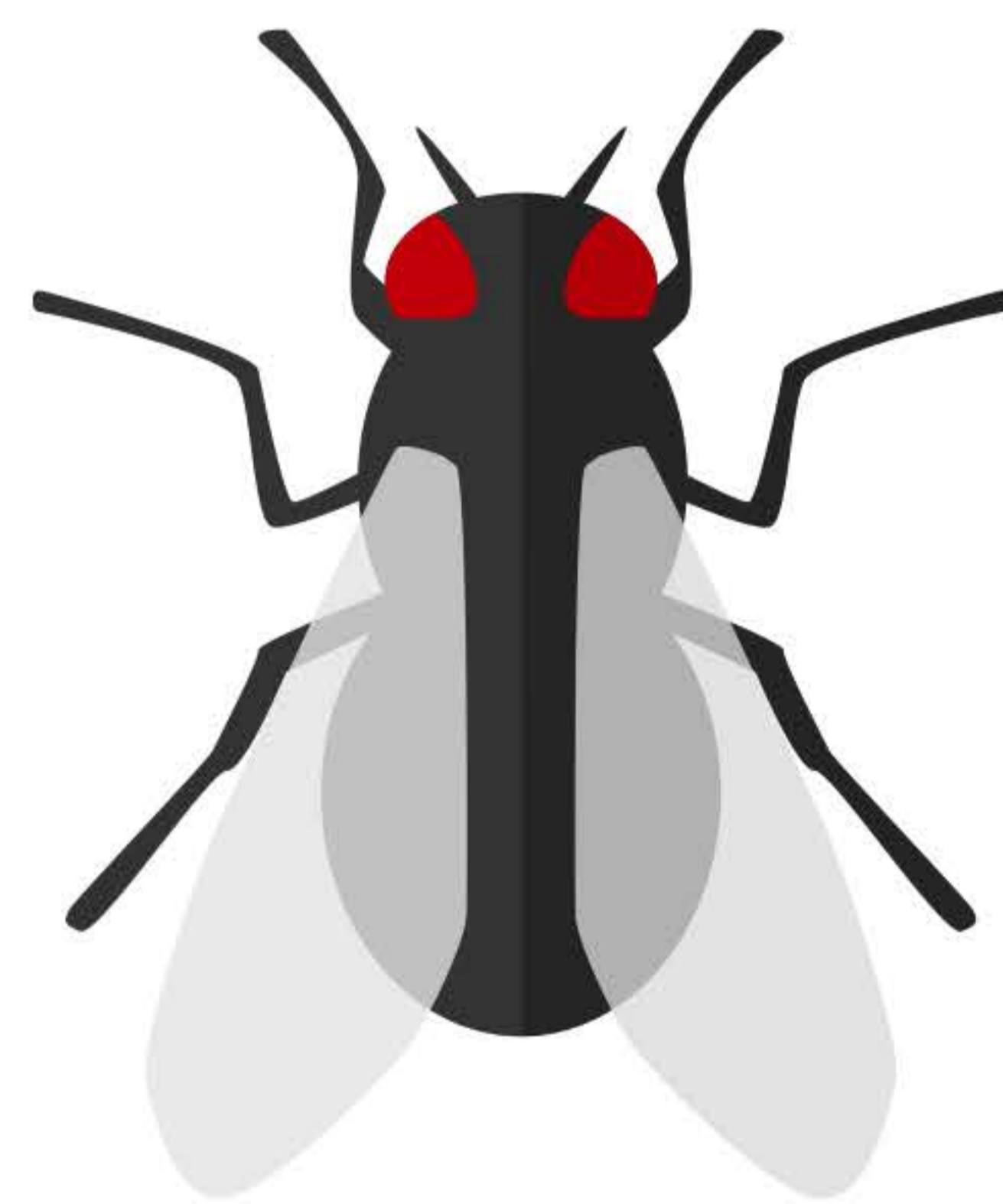
Jellyfish



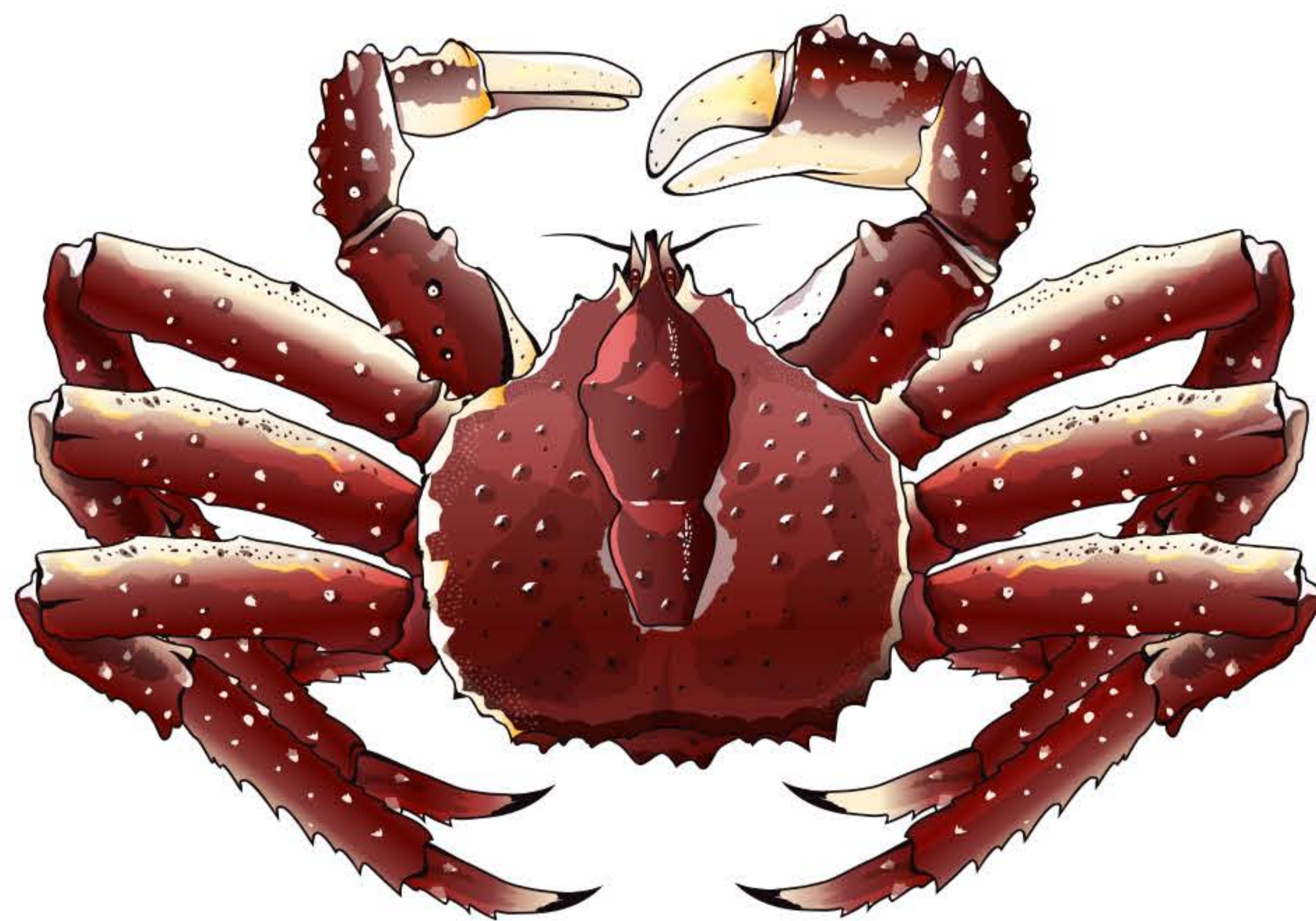
Snail



Honey Bee



Red King Crab



Identify and classify the animals into Vertebrates and Invertebrates and write them in the correct columns.

Human beings, Jellyfish, Snail, Chameleon, Shark, Gorillas, Colossal Squid, Peacock, Honey bee, Silverfish, Eagle, Silkworm, Frog, Red King Crab, Goldfish, Common Octopus, Common Fruit Fly, Salamanders, Monarch Butterfly, Lizard,

VERTEBRATES

INVERTEBRATES