

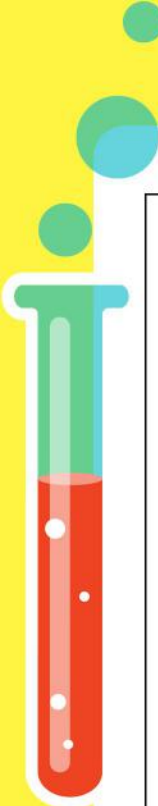
# What Are The Terminologies Used In Scientific Research?



Read each question and hypothesis and use your logical reasoning to fill in the columns of the experiment, data, and conclusion. One has been done for you.

Sr No.	Question	Hypothesis	Experiment	Data	Conclusion
1.	Why does my apple turn brown when cut in slices and left in the open for some time?	If I wrap my cut apples in a cellophane sheet they might not turn brown.	I cut four apples into four slices each, wrapped them tightly in a cellophane sheet, and left them in the refrigerator for one hour.	All the four slices of the four apples did not turn brown and retained their original color for one hour.	Wrapping cut apples in cellophane sheets helps prevent discoloration for some time.
2.	Why do my flashlight batteries drain out even if I do not use them?	If I plug the batteries in a direction where they won't complete the circuit, then the batteries may last longer.			





3.	Why is the air conditioner in my room efficient enough during the night, but not efficient during the day?	If I draw the curtains during the day and block the sunlight from entering my room, the air conditioner might work better.			
4.	Why do my raw beans get cooked faster at times and not always?	If I soak my raw beans overnight in warm water, they might get cooked faster.			
5.	Why does the amount of sugar I can dissolve in water of the same quantity differ every time?	If I dissolve my sugar in warm water, it might dissolve faster.			

