



# Types Of



## Roller Skate Wheels



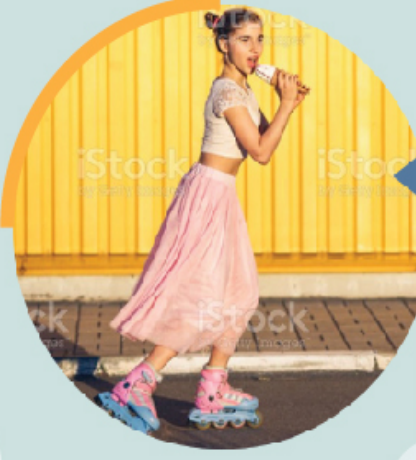
### Indoor

Usually, these wheels are harder and help roll easily on smooth surfaces.



### Outdoor

Softer than indoor wheels and with good shock absorption, these wheels help ride on uneven terrains.



### Jam

Suitable for gymnasts and dancers, these wheels help them ease their agile movements.



### Speed skate

They allow you to roll fast with less effort. It is also suitable for jam skating.



### Roller derby

Suitable for beginners, they prevent toppling and are considered basic wheels.



### Artistic

These wheels have a narrow width for easy maneuvering against the floor.

