

# HOW TO USE *Sunscreen* FOR ROSACEA?



Silicone (in the form of Dimethicone or Cyclomethicone)



Offering SPF15 or higher



Titanium dioxide



Zinc



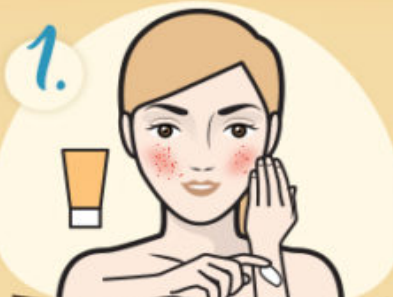
UVA and UVB protection

## WHAT INGREDIENTS TO LOOK OUT FOR?



## HOW TO APPLY SUNSCREEN FOR ROSACEA?

1.



Always perform a patch test.

2.



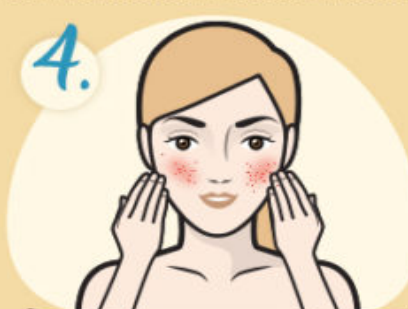
Wash your face with dermatologically-approved products.

3.



Take an ounce of sunscreen.

4.



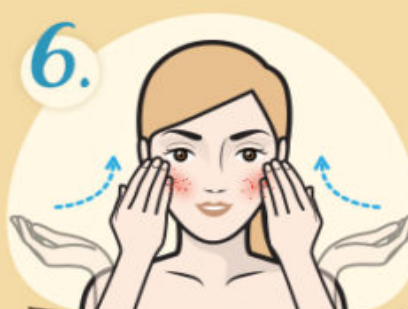
Spread it well on your entire face.

5.



Apply sunscreen at least 30 minutes before leaving home for maximum absorption.

6.



Reapply sunscreen every two-three hours.