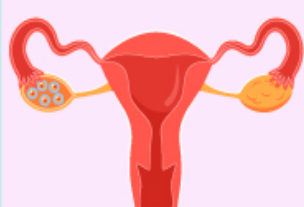




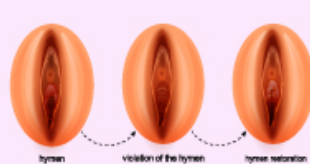
Understanding The FEMALE REPRODUCTIVE SYSTEM



At puberty, the female ovaries contain about 300,000 eggs, which decline in number as age progresses.



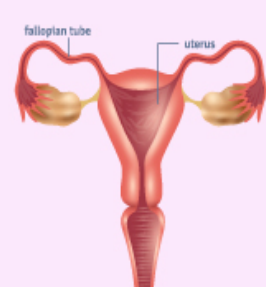
A normal uterus measures about three inches long and two inches wide but expands several times during pregnancy.



There is no correlation between the hymen being intact and virginity.



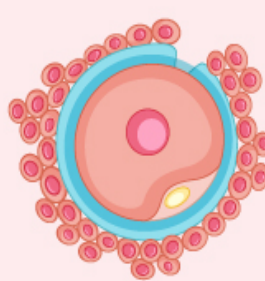
The average size of each ovary is about the size of an almond.



Inside the fallopian tube, tiny hair-like structures called cilia gently sway and push the egg toward the uterus.



The ovum is the largest cell in a female body.



The fusion of the ovum and the sperm form a single-cell entity called the zygote.



The vagina's pH is acidic, usually between 3.8 and 4.5 on the pH scale.

