

Major Fetal Developments



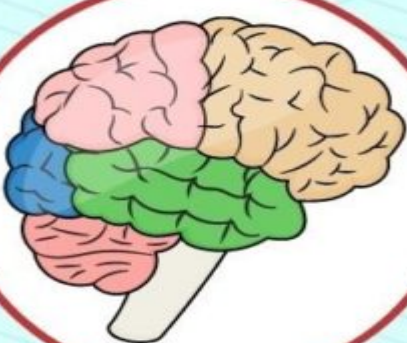
At 11 Weeks Of Pregnancy

Facial features are developed, including their nose and mouth



Hands can now open and close into fists

Heart is developed fully and pumps blood



Brain and nervous system are still developing

Head is large and is about half the size of the body



Ultrasound scan can distinguish male and female genitals

Intestines start to absorb glucose and water from the swallowed amniotic fluid



Baby's eyelids are still closed