

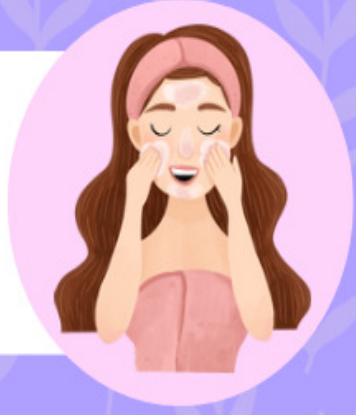


## Steps To Apply

### A Gel Liner

#### Step 1

Prep your face by cleaning.



#### Step 2

Apply a concealer or primer as a base to make the eyeliner last long.



#### Step 3

Pick a flat or thin brush.



#### Step 4

Dip the brush's bristles into the eyeliner pot and ensure you remove the excess by wiping them onto the sides of the pot.



#### Step 5

Hold the brush at an angle and apply it from the inner corner to the outer corner.



#### Step 6

Repeat the same step with the other eye. Ensure you leave no space between the lash line and eyeliner.



#### Step 7

Now, add a wing by extending the liner in continuation with the outer line.

