

TIPS TO USE COOL-TONED EYESHADOW *Palettes*



Begin with applying a primer to let your eyeshadow stay longer.

Choose colors/shades that go with your natural skin tone from the palette.



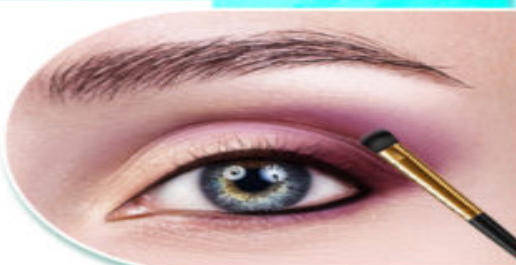
Apply the shade (a few shades darker than your natural skin tone) over your entire eyelid with a fluffy brush.

Use the same color and brush to apply to your lower lash line.



Create a crease on your eyelid folds with a darker shade.

Blend the two colors with a smooth brush.



Highlight with a shimmery tone to add an extra pop.

Coat your lashes with mascara to complement your crease.

