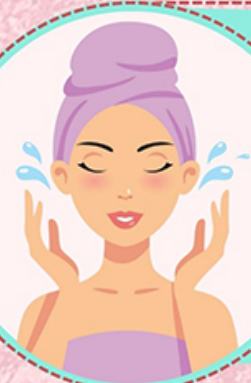




## Step-By-Step Guide On Applying *Eyelash Extensions*

Gather all necessary tools, including glue, tweezers, and a glue dish.



Ensure that your eyes are clean and free of makeup or oils before applying the glue.

Shake the glue bottle well to mix the contents evenly.



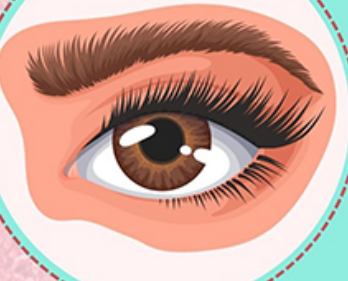
Use the tweezers to pick up a small amount of glue, and apply a thin, even layer to the base of the extension.

Position the extension near the base of your natural lash with the tweezers and gently press it into place.



Repeat the process with the remaining extensions.

Be sure to work quickly as the glue sets in a few seconds.



Allow the glue to dry for a few minutes before opening your eyes.