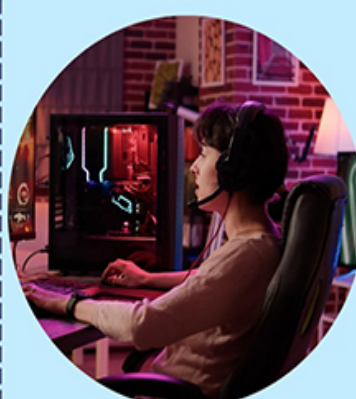


## Points To Consider When Selecting A

# GAMING Chair



The chair must recline at an adequate angle to support the back and spine.



High-quality PU leather chairs are easier to clean and stain-resistant.



The fabric should be breathable.



Select a chair with a metal base if you need a sturdy chair.



Adjustable armrests provide customized comfort.



Watch out for added accessories such as footrests, cup holders, and massaging functions.

