



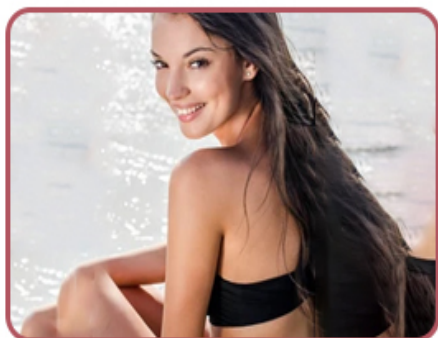
Tips To Ensure Your Strapless Bra Stays In Place



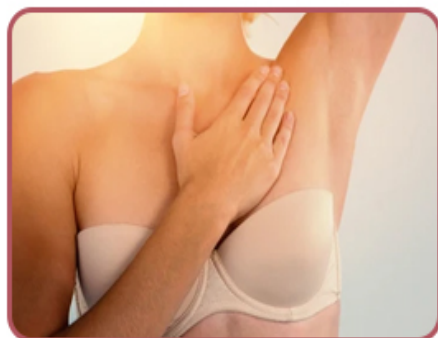
Go for a strapless bra with a three-hook wide strap for ample support.



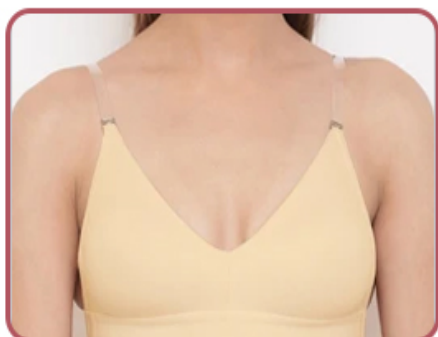
Pick a strapless bra with silicone-lined cups for a slip-resistant hold.



Practice moving around while wearing the bra to determine if it slips.



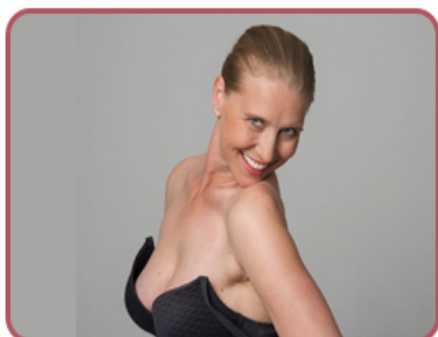
Avoid body lotions and powders on the bust to maintain dry skin for proper bra grip.



Attach invisible straps to convertible strapless bras for added security.



Secure the bra using a double-sided body or cloth adhesive tape.



Enhance the hold of the bra band by adding gripper strips to the bra.



Pair the bra with close-fitting clothes to further secure it in place.