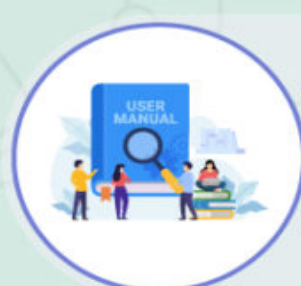




# Tips For Using An Automatic Trash Can Correctly



Read the manufacturer's instructions before installing the trash can.

Place the automatic trash can away from sunlight.



Keep the trash can away from other electronic kitchen devices.

Never mix old and new or regular and rechargeable batteries for the can.



Never forcefully close the lid to prevent damaging its automatic mechanism.

Ensure to keep the infrared sensor clean for optimum efficiency.



Clean the electronic components only with a damp cloth.

Remove the batteries before storing the can for an extended period.

