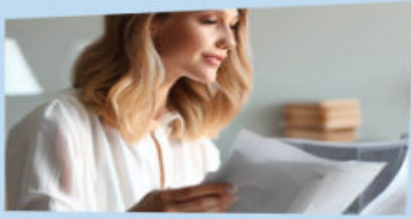




Tips For Using Portable Cribs Safely



Adhere to the weight and height restrictions prescribed by the manufacturer.



Follow all the assembly instructions carefully to ensure maximum safety.



Avoid using the crib if any of its parts are missing or damaged.



Use the crib only with the mattress provided by the manufacturer for a secure fit.



Avoid adding an extra mattress to prevent the child from climbing out of the crib.



Use the provided stiffened base to prevent the child from overturning the crib.



Place the baby in the crib on their back to minimize the risk of SIDS.



Do not leave the child unattended in the crib.



Avoid using improvised netting to cover the crib, as it may lead to entrapment.



Regularly check all the fittings to ensure the baby's safety.