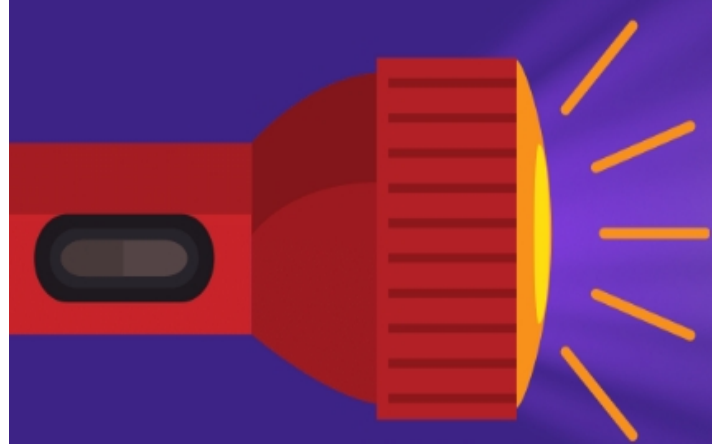


Steps Involved In Detecting Urine With A UV FLASHLIGHT



Step 1

Secure your pet outside the room you are about to inspect.



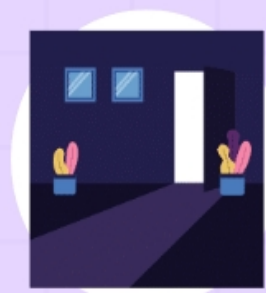
Step 2

Wear UV-blocking glasses before beginning the detection process.



Step 3

Darken the room, as UV lights work only in low-light conditions.



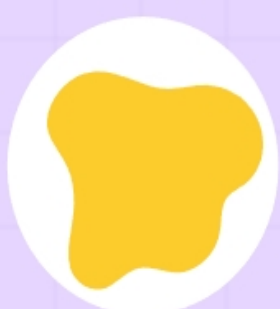
Step 4

Flash the light throughout the room to illuminate dried-up urine stains.



Step 5

Look for bright yellow or green stains as they indicate dried-up urine spots.



Step 6

Apply a stain removal solution to the stains, using the UV light as a guide.



Step 7

Switch on the lights and complete the stain removal process.

