



# Amaze Your Child With These Clownfish FACTS

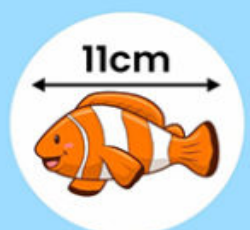
Male clownfish (the fathers) guard eggs until they hatch into young ones.



They live from eight to twelve years.



They can grow up to 11 cm in size (the average size is 8 cm).



Females lay about 1000 eggs; older females lay more eggs.



All clownfish are born males and some change to females.



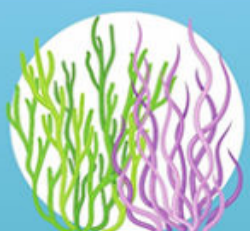
They have a special mucus layer that is believed to protect them from stings.



They communicate through popping and clicking noises.



They feed on aquatic plants and small invertebrates.



## References

1. Clownfish; Aquarium of the Pacific
2. Clownfish; Great Barrier Reef Foundation

