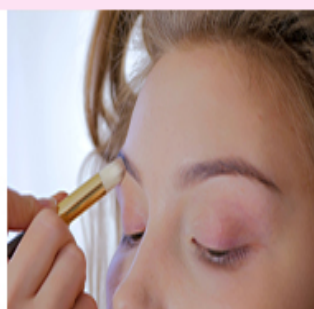




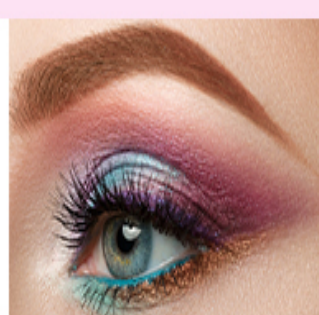
Common Mistakes When Creating *Smokey Eyes*

Skipping the primer at the onset can lead to creasing.



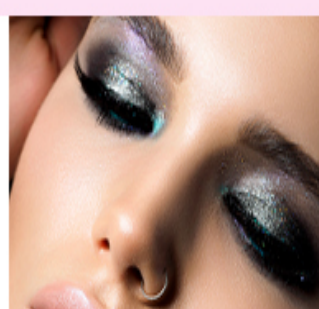
Omitting the undereye patch can lead to a raccoon-eye look.

Using darker shades on the inner eyelid corner can yield a tired look.



Going overboard with the color range can lead to a messy look.

Omitting the neutral shadow at the edges can inhibit seamless blending.



Skipping the loose powder at the end can lead to smudging.