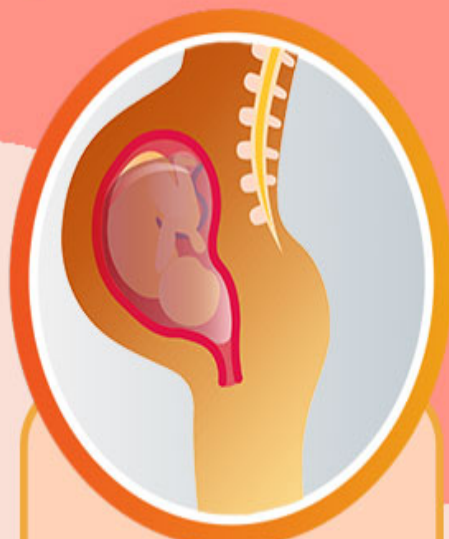


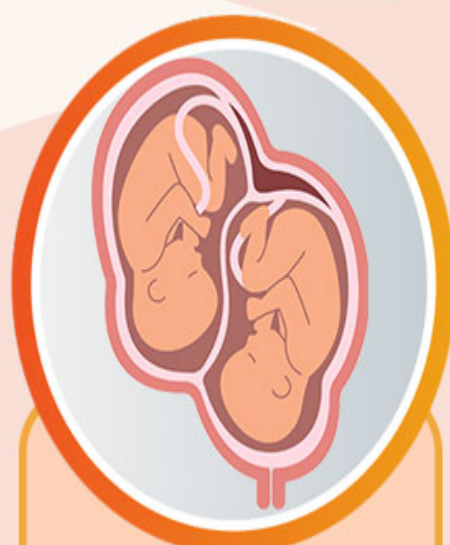
# Possible Causes Of Umbilical Cord Prolapse



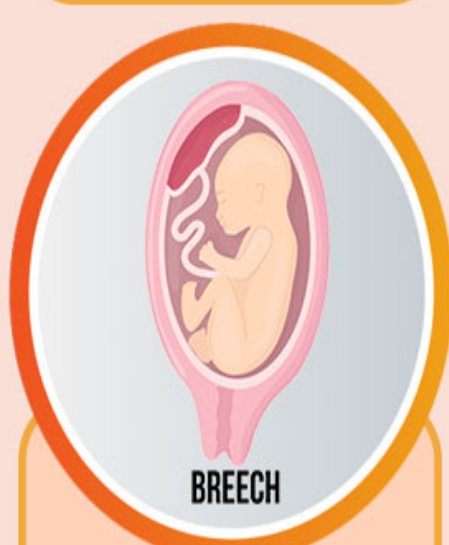
Premature rupture  
of the membranes  
(PROM)



Polyhydramnios

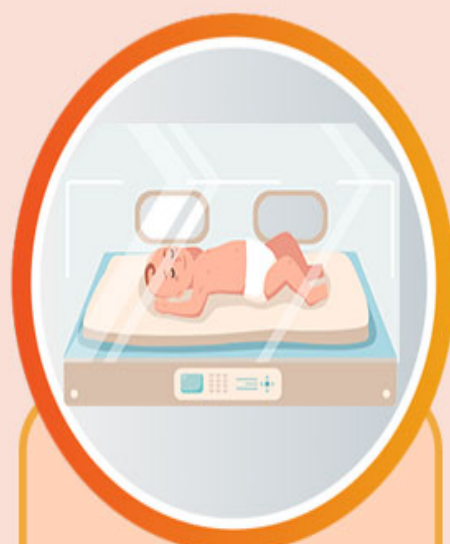


Delivering  
multiple babies



BREECH

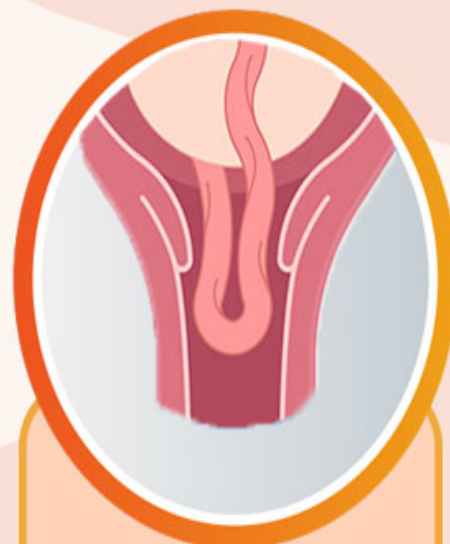
Malpresentation  
of the baby



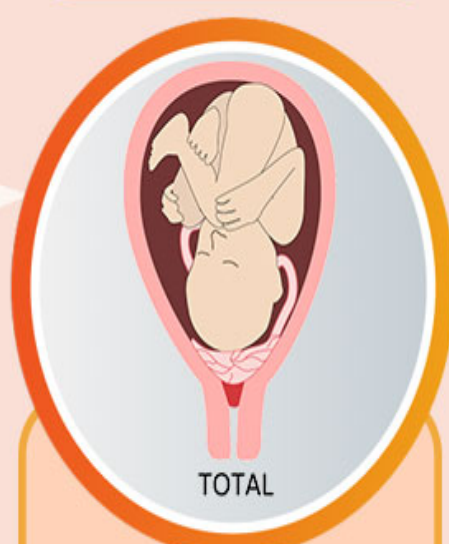
Premature delivery



Long cord



Funic presentation



TOTAL

Placenta  
previa (low-lying  
placenta)