

HOW CAN A WOMAN CONCEIVE A BABY BOY

Methods based on the intercourse timing



The Billings method suggests having intercourse less than 2 days before ovulation.

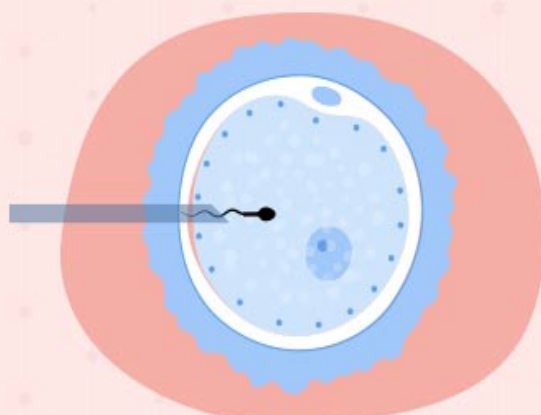
The Shettles method suggests having intercourse closer to the day of ovulation.



The Whelan method suggests having intercourse at least 4-6 days before ovulation.

Medical methods

Preimplantation genetic diagnosis in conjunction with IVF.



Sperm sorting, also known as the MicroSort Method, using a flow cytometry.