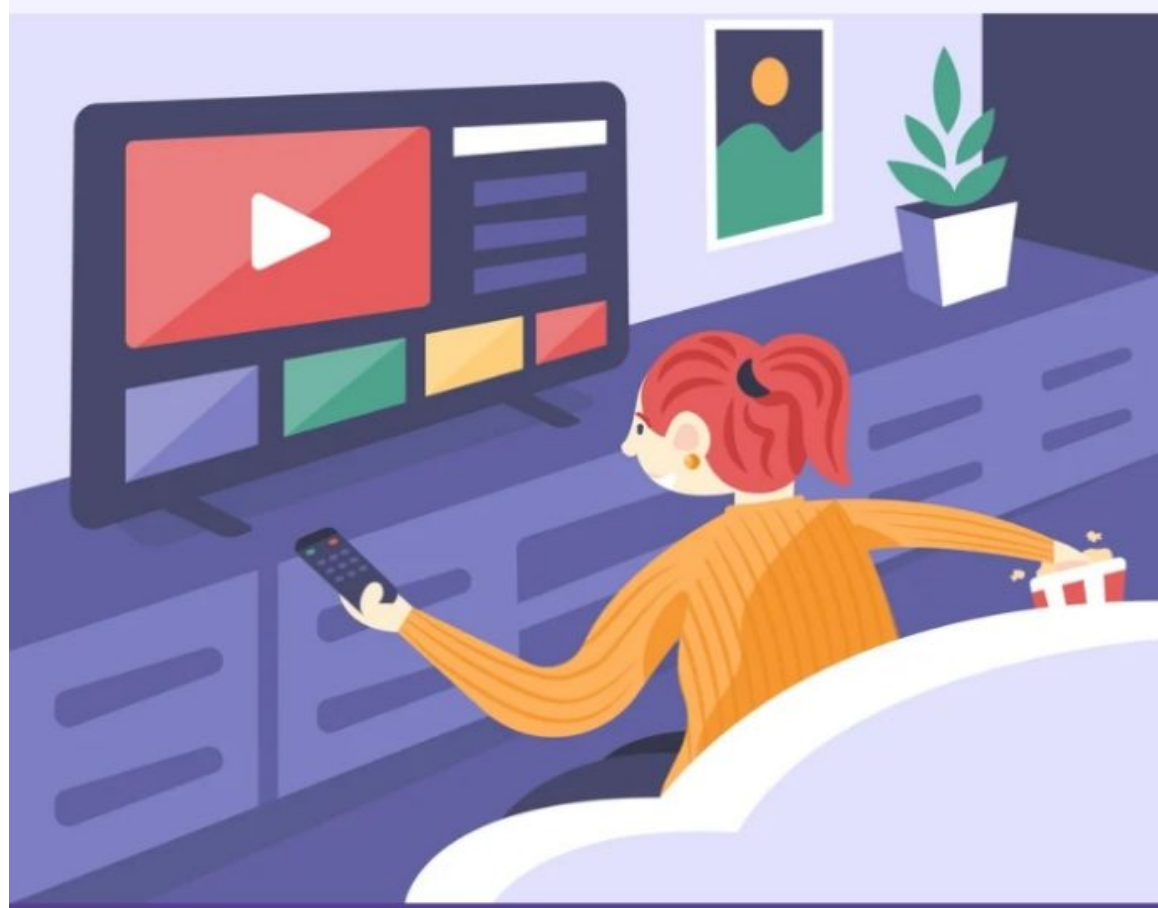


# NOTABLE TYPES OF TV Stands Or Units



## Wall-mounted

It is the most space-saving design where you hang the TV to a wall and decorate the surroundings.



## Open shelves

In this design, a central frame holds the shelves and provides brackets to mount the TV.

## Console

It is the most popularly seen TV stand where you have some open and closed shelves and a surface area to keep your TV.



## Stand with audio towers

The design is suitable for large spaces. It has a central TV stand with some shelves and towers on either side of the TV stand to store the audio speakers and other supplements.



## Hutch

Storage is no limit with this design. It looks gigantic where cabinetry is stacked on counter space.



## Cabinet

Hide the screen when not in use. In this design, the shelves and the TV units have closed doors or shelves with drawers.

## Swivel

The entire stand rotates on a disc or rotator to adjust the TV from different angles.



## Floating

In this design, the TV and the shelves are wall-mounted, providing an open space below the stand.