

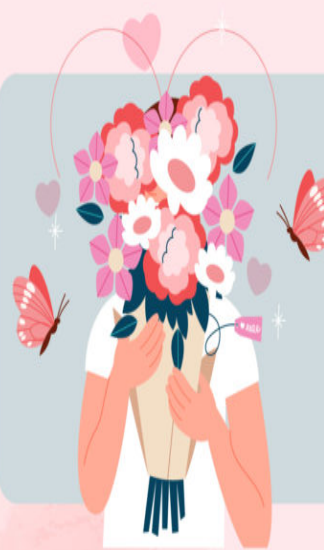


TIPS TO WRITE A Romantic And Personalized Poem

FOR YOUR LDR PARTNER

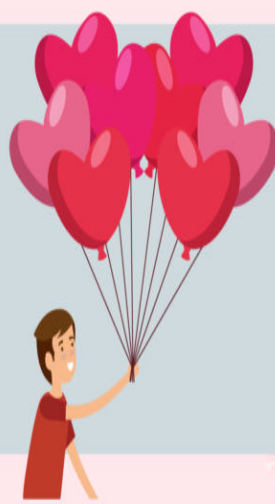


Pick your subject and form the structure around it. It can be about their beauty, caring nature, or presence in your life.



Use metaphors relevant to your partner and the relationship so that they can relate to what you wish to express.

Add details only you and your partner know to make it more romantic. You may write about things you notice in them or something they do.



Don't shy away from being vulnerable. It is your partner, and you can unapologetically bare your heart to them.

Try to be yourself rather than imitating a specific poem if you want it to be personal. Don't focus much on rhyming words or rich vocabulary but pen down your true feelings.

