

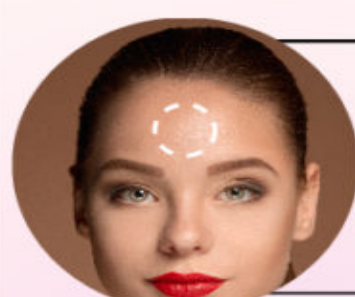
Parts Of The Face



You Should Apply



A Highlighter On



Centre of the forehead to brighten up your face instantly



On the temples to instantly add a dimension to your forehead



Below the arch of the eyebrows for well-defined eyes



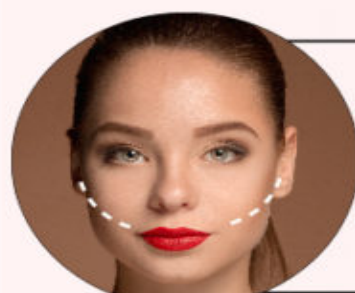
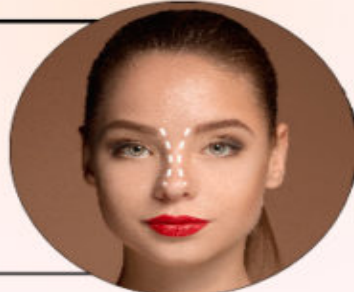
Inner corners of your eyes for an awake look and to create the illusion of larger eyes



Under the eyes to give the face an instant glow up

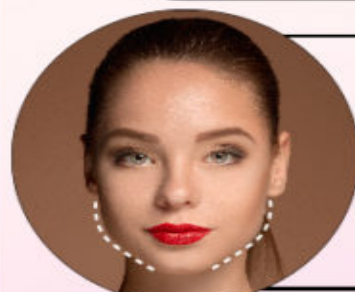


Bridge of the nose for a slimmer-looking, contoured nose



Cheekbones for a lifted appearance, making the bone structure prominent

On the Cupid's bow to create a pouty and fuller lip appearance



Along the jawline to achieve a sharper and more defined facial contour

Center of the chin to create the illusion of a longer face

